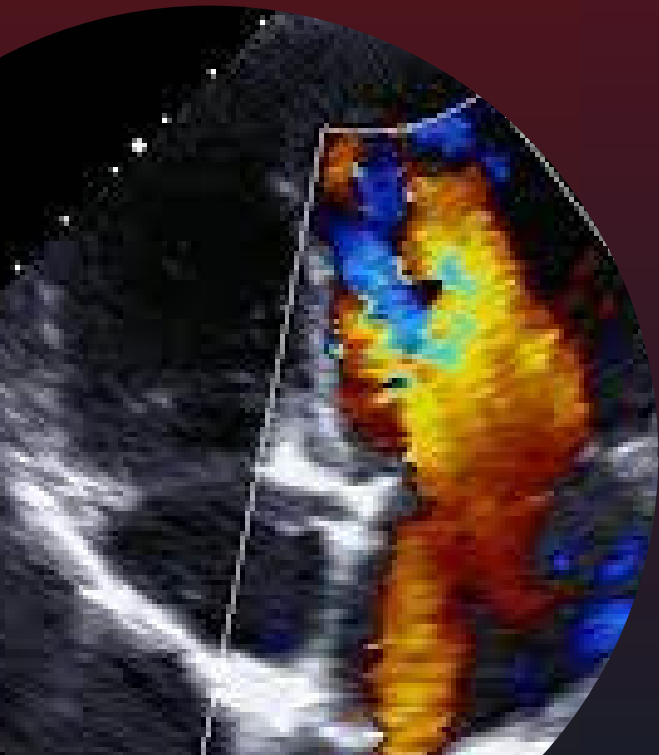


WHAT IS ECHOCARDIOGRAPHY?

An echocardiogram (echo) is a diagnostic procedure to evaluate the structure and function of the heart. The test uses high frequency sound waves (ultrasound) that takes moving pictures of the heart. The tests are harmless and painless to the human body.

The types of echocardiograms are:

- Transthoracic echocardiography
- Exercise stress echocardiography
- Transesophageal echocardiography



CALL TO SCHEDULE

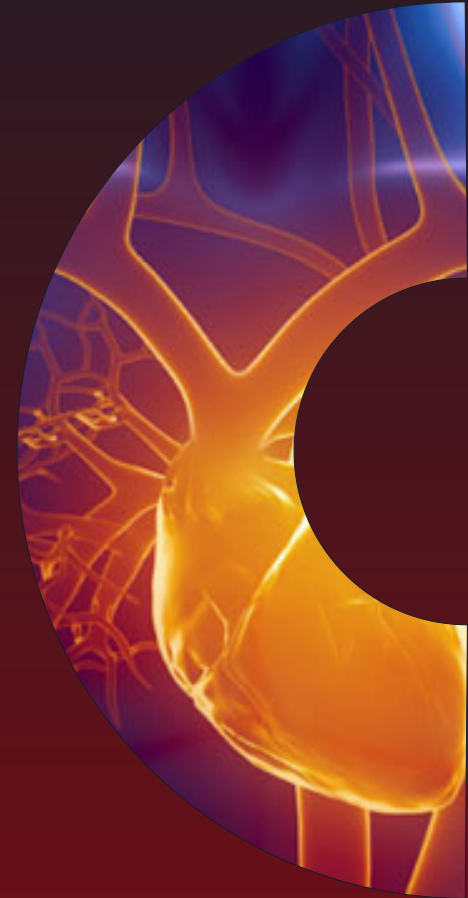


520.838.3540

www.pimaheartandvascular.com

LOCATIONS

We offer office-based testing and imaging, including echocardiograms and stress echoes at most of our Tucson locations. We also extend this service to most of our satellite locations. We now have 25+ locations, creating more access for our patients.



Follow Us



Patient Education Echocardiography



WHY DO YOU NEED AN ECHO TEST?



INDICATIONS

Your doctor may recommend an echocardiogram to investigate:

- Chest pain or angina
- Difficulty breathing or dyspnea
- Irregular heartbeats
- Abnormal heart sounds such as murmurs and clicks
- You've had a heart attack
- You've had rheumatic fever

An echocardiogram shows the function of the heart valves and the size and shape of the heart chambers. It can help diagnose various heart diseases such as atherosclerosis, congestive heart failure and valvular heart disease.

www.pimaheartandvascular.com

WHAT IS THE PROCESS?

The test takes about an hour.

Echo tests are done by trained sonographers. Tests can be conducted in your doctor's office, an emergency room, an operating room or in hospital clinic.

1

- You will rest on a bed on your back or or left side.
- The sonographer will administer a special jelly on a probe and move it over your chest area.

2

- High-frequency sound waves will pick up images of your heart and valves. No X-rays will be used.

3

- You may be able to view your heart's movements on the screen during the test.
- The test has no side effects

Occasionally the probe needs to be closer to the heart to capture more clear images. You may need a special test called Transesophageal Echocardiography (TEE).

A TEE is different from other forms of [echocardiogram](#) because it takes pictures from within your body, rather than outside of it.

TEE tests are ordered by your doctor and scheduled in a hospital.

Setting up



WHAT DOES THE TEST REVEAL?

- The size and shape of your heart
- How well your heart is functioning overall
- If a wall or section of the heart muscle is weak and not working optimally
- If you have problems with your heart valves
- If you have a blood clot

WHAT HAPPENS AFTER THE TEST?

Your health care professional will talk with you after looking at your echo pictures and discuss what the pictures show. From there, results will be shared with your primary care provider and a care plan will be created.

PATIENT QUOTES

"Dr. Lancero is kind and straightforward. His staff is amazing and compassionate. And when I went in for an echocardiogram I was nervous, but Stacy made me feel comfortable and reassured me. I definitely feel like I'm in good hands at Pima Heart & Vascular."

~Jayne K.

"I was scheduled for an Echocardiogram & Holter monitor. Once I checked in, it was only a matter of minutes & I was called back for my appointment. The technicians were expedient, thorough, & knowledgeable!"

~Katrina S.